

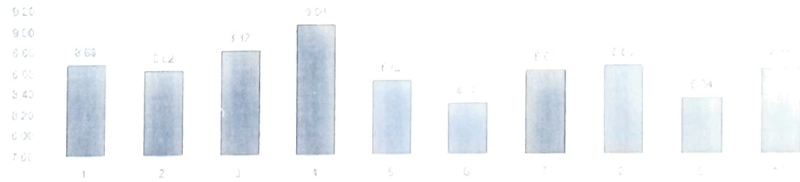


Bansilal Ramnath Agarwal Charitable Trust's
VISHWAKARMA INSTITUTE OF TECHNOLOGY
 (An Autonomous Institute Affiliated to Savitribai Phule Pune University)

Stakeholders feedback Analysis AY 2023-24

Academic year	Stakeholders	No. of Feedbacks received	Q. No.	1	2	3	4	5	6	7	8	9	10
			Teachers, Students, Employer, Alumni, Parents Feedback	Bridge the gap between industry requirements and academia	Potential for Employability	Curriculum covers the latest state of art topics	Reference material and books available	Blended learning and futuristic pedagogy	Evaluation methods for providing proper assessment	Hands-on component in the Curriculum is satisfactory	Covers of socially relevant issues	Curriculum gives inputs to students for business acumen and ethical	Knowledge gain through experiential learning
2023-24	Students		Av. Score	8.8	8.88	8.78	9.02	8.6	8.3	8.51	8.62	8.62	8.8
	Teachers		Av. Score	8.73	8.52	8.74	9	8.86	8.4	8.79	8.54	8.22	8.41
	Employers		Av. Score	8.52	8.7	8.86	9.1	9	8.58	8.42	8.7	8.52	8.53
	Alumni		Av. Score	8.61	8.52	8.88	9.2	8.1	8	8.56	8.73	8.62	8.8
	Parents		Av. Score	8.75	8.88	8.82	9	8.23	8.2	8.78	8.88	8.32	8.54
	Total		Av. Score	8.68	8.62	8.82	9.06	8.52	8.30	8.61	8.65	8.34	8.62

Stakeholders Feedback Analysis AY 2023-24



[Signature]
 Head Department of Mechanical Engineering
 Vishwakarma Institute of Technology,
 Pune-411037.



Bansilal Ramnath Agarwal Charitable Trust's
VISHWAKARMA INSTITUTE OF TECHNOLOGY
(An Autonomous Institute Affiliated to Savitribai Phule Pune University)

Stakeholders Feedback Summary AY 2023-24

Based on Stakeholders feedback analysis important observations summarized as below

Parents:

- Overall curriculum is good and balanced
- Evolution scheme is compressive for overall development of student
- Knowledge gain through project-based learning is satisfactory

Students:

- Overall curriculum and academic processes are good and satisfactory
- More focus is required on core courses and more electives can be offered
- Interdisciplinary subjects are good,
- Many assessment parameters, may be reduced

Faculty:

- Overall curriculum is good and balanced for overall development of students
- More focus is required on core courses and experiential learning
- Emphasis on innovation & creativity of students

Employer:

- Internship initiative is carried good impact
- Need to improve employability skills of students
- Need to minimize the gap between industry and academic institutes


Alumni:

- Focus on project based learning, soft skill and overall development of students
- Internship initiative is carried good impact
- Need to improve employability skills of students

Summary:

Overall, curriculum and teaching learning processes are excellent; however, need to include some new courses which cover fundamental and advance topics based on current industry need. Also, need to outcomes in terms of technical, research innovations, publications and patents etc. Focus on overall development of students.




Head Department of Mechanical Engineering
Vishwakarma Institute of Technology,
Pune-411037.



Bansilal Ramnath Agarwal Charitable Trust's
VISHWAKARMA INSTITUTE OF TECHNOLOGY
(An Autonomous Institute Affiliated to Savitribai Phule Pune University)

Action Taken Report

- The NPTEL / Swayam courses such as SUSTAINABLE POWER GENERATION SYSTEMS, RAPID MANUFACTURING, INTRODUCTION TO COMPOSITES, OPERATIONS AND SUPPLY CHAIN MANAGEMENT, and AUTOMATION IN PRODUCTION SYSTEMS AND MANAGEMENT are offered to B.TECH. Mech. Final year w.e.f. AY 2024-25
- Linkedin courses are introduced to B.TECH. Mech final year w.e.f. AY 2024-25. Linkedin course module "Data Visualization and Storytelling" containing 5 sub courses in place of OE1. Data Visualization: Storytelling, Picking the Right Chart for Your Data, Data Visualization for Data Analysis and Analytics, Data Visualization: Best Practices
- Two additional courses, namely MACHINE DRAWING and MECHANICS OF MATERIALS are introduced to SY mech. w.e.f. AY 2024-25
- Also Linkedin courses are offered as an audit courses to SY and TY students based on Advanced and Weak learners module
- Updated the assessment scheme




Head Department of Mechanical Engineering
Vishwakarma Institute of Technology,
Pune-411037.